

Sophos UTM

Unified Threat Management makes security simple

Sophos UTM gives you complete security from the network firewall to endpoint antivirus in a single modular appliance. It simplifies your IT security without the complexity of multiple-point solutions. The intuitive interface will help you quickly create policies to control security risks. And clear, detailed reports will give you the insight you need to improve your network performance and protection.

Highlights

- ▶ Every feature available on every appliance
- ▶ Firewall, VPN, ATP, IPS, email, web filtering and app control
- ▶ Hardware, virtualized, software or cloud-based appliance
- ▶ Intuitive browser-based interface
- ▶ Built-in reporting on all models
- ▶ Two-factor authentication with one-time password (OTP) in many areas
- ▶ Integrated wireless controller

Consolidated network security platform—no compromise

Protect your network using multi-layered proven protection technologies including Advanced Threat Protection (ATP), IPS, VPN, email and web filtering combined with the industry's simplest admin interface. We've engineered our software and hardware to give you the throughput speeds you need. And, you can choose the level of protection you need with modular subscriptions as every feature is available on every appliance.

All the Next-Gen Firewall features you need

We'll give you complete control to block, allow, shape and prioritize applications. Our Deep Layer-7 inspection (Next-Generation Firewall) ensures true application identification and has regular automatic updates. And you'll get feedback on unclassified applications too.

Intuitive management and detailed reporting

You'll know what's happening with your users and you'll have complete control over all the features you need, with none of the complexity. Easily build policies while getting detailed real-time and historical data with our on-box reporting, helping you to fix problems fast. And our Free Sophos UTM Manager lets you centrally administer several appliances through a single login.

Connect remote offices with easy VPN and Wi-Fi

Sophos RED (Remote Ethernet Device) provides secure remote access to your off-site locations. It's the first security gateway that requires no technical skills at the remote site. Once installed, it forwards traffic to the UTM for complete security. Sophos UTM also works as a wireless controller; access points are automatically set up and receive complete UTM protection.

"We chose Sophos UTM for its all-in-one approach, trouble-free installation and management at an affordable price".

Martin Bělohávek, Systems Administrator, MAN ČR, MAN Group



Choose your security applications

Our Linux-based OS includes a free Essential Network Firewall. It provides fundamental security like firewalling, networking tools, routing and secure remote access. And our modular approach lets you add layers of protection as your needs evolve.

UTM Network Protection stops sophisticated attacks that a firewall alone can't stop.

- ▶ ATP combines multiple technologies to identify and block outgoing traffic to command-and control hosts. Combine with Web to add cloud-based selective sandboxing to constantly improve protection
- ▶ Configurable intrusion protection system and flood protection against denial of service attacks
- ▶ IPsec and SSL tunnels provide flexible site-to-site and remote-access VPN connections

UTM Email Protection stops spam and viruses and keeps sensitive data safe.

- ▶ Provides simple infrastructure-free email encryption and policy-based DLP to protect sensitive data and easily stay compliant
- ▶ Let users manage their spam quarantine and search a personalized mail log
- ▶ Keep infected emails out of your mailbox and protect confidential emails against illegitimate access.

UTM Wireless Protection gives you secure Wi-Fi in minutes.

- ▶ Centrally manage access points through the UTM's built-in wireless controller
- ▶ Easily set up wireless hotspots and grant guest access using backend authentication or a customizable voucher-based system.

UTM Web Protection lets you protect your employees from web threats and control their time online.

- ▶ Step-by-step guidance to create fully transparent user-based policies with authentication by device type
- ▶ Limit use of unwanted applications while giving priority to business critical resources
- ▶ Use the policy tester to check if your policy is working and create dynamic reports
- ▶ Integrates with SEC managed endpoints, allowing you to keep your existing Sophos antivirus and use the UTM for Web policy

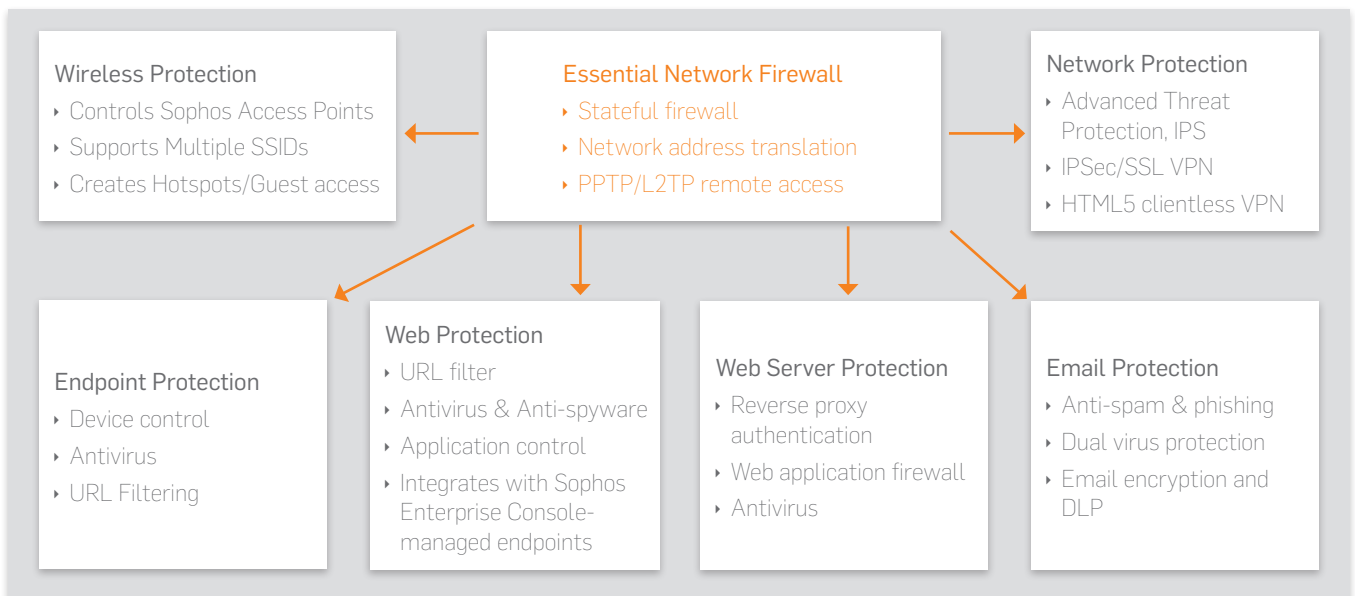
UTM Webserver Protection hardens web servers and apps ensuring compliance with a web application firewall.

- ▶ Reverse proxy authentication (offloading) inspects information submitted via forms on your websites to prevent server exploits
- ▶ Protect personally identifiable information like credit card and social security numbers

UTM Endpoint Protection provides desktops, laptops, and servers with antivirus, device and web control.

- ▶ Scans files, webpages and devices blocking or cleaning threats and providing admin alerts
- ▶ Device control reduces the risk of data loss and malware by managing removable devices
- ▶ Built-in URL filtering ensures users get the same level of web protection outside of the office as they do inside.

Add modules when you need them



"With the Sophos appliances, we experienced greater productivity, reduced risk and costs savings."

William Strucke, Systems Manager, The Ohio State University

Choose your license

We give you the flexibility to license our protection modules individually. Or, you can choose one of our pre-packaged licenses. Whatever suits your needs.

| | Next-Gen Firewall | BasicGuard | FullGuard |
|---|---------------------------------|---------------------------------|---------------------------------|
| Modules - Choose the ones you need | Request a quote | Request a quote | Request a quote |
| Essential Firewall - Free Network Firewall, NAT, Native Windows Remote Access | Full | Full | Full |
| Network Protection IPSec/SSL, ATP, VPN, IPS, DoS Protection | Full | Basic | Full |
| Web Protection URL Filtering, Application Control, Dual Engine Antivirus | Full | Basic | Full |
| Email Protection Anti-spam, Email Encryption and DLP, Dual Engine Antivirus | Optional | Basic | Full |
| Wireless Protection Wireless Controller, Multi-SSID Support, Captive Portal | Optional | Basic | Full |
| Webserver Protection Web Application Firewall, Reverse Proxy, Antivirus | Optional | – | Full |
| Endpoint Protection Antivirus, HIPS, Device Control | Optional | Optional | Optional |

Extend your security

Sophos RED Simply secures your branch offices by forwarding all traffic to the central Sophos UTM. Installation requires no technical training and there is no ongoing maintenance.



Wi-Fi Access Points Configurationless access points are instantly protected by the UTM, letting you create secure mesh networks.

VPN Clients Secure SSL or IPsec VPNs provide mobile and home workers with secure remote access from any location at any time.

Free UTM Manager Centrally manages multiple UTM devices through IPsec VPN tunnels; deploys policies in just a few clicks.



Choose how to deploy

You can choose to install as hardware, software or a virtual appliance or even in the cloud.

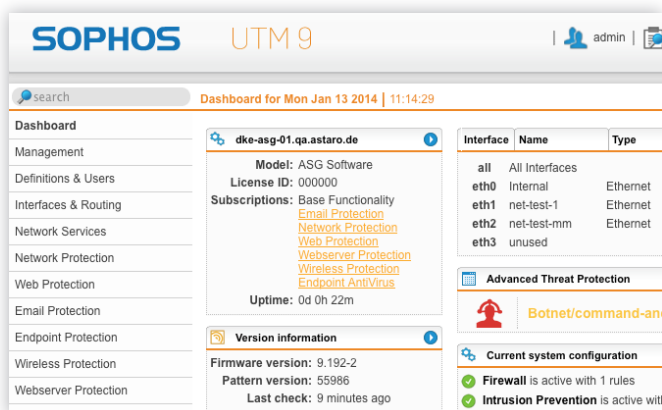
Hardware appliances are purpose built, high-performance devices. They integrate our security applications with a hardened operating system (OS) on optimized Intel compatible server systems. Every feature is available on every appliance. [See technical specifications.](#)

Software appliances integrate all security applications with a hardened OS bundled within a single software image. Easily installs on your hardware of choice.

Virtual appliances are based on the software equivalent. Sophos UTM is the first unified threat management product to be certified as VMware Ready and Citrix Ready. It also runs in Microsoft Hyper-V and KVM virtual environments.

Cloud-based appliances using Amazon Virtual Private Cloud (VPC) let you run a UTM in the cloud. Or, you can use the Amazon VPC connector on the UTM at your office for secure and robust access to your Amazon-hosted resources.

User Interface



Everything in one console

Sophos UTM Certifications



| Hardware appliance | UTM 100 | UTM 110 | UTM 120 | UTM 220 | UTM 320 | UTM 425 | UTM 525 | UTM 625 |
|------------------------------|-----------|-----------|-----------|-----------|-----------|-----------|---------------------------|---------------------------|
| Firewall throughput | 250Mbit/s | 1Gbit/s | 1.8Gbit/s | 3Gbit/s | 3.5Gbit/s | 6Gbit/s | 23Gbit/s | 40Gbit/s |
| VPN throughput | 60Mbit/s | 100Mbit/s | 180Mbit/s | 500Mbit/s | 800Mbit/s | 2.5Gbit/s | 4.2Gbit/s | 5.5Gbit/s |
| IPS throughput | 60Mbit/s | 140Mbit/s | 420Mbit/s | 1.1Gbit/s | 1.9Gbit/s | 5.5Gbit/s | 6.8Gbit/s | 9Gbit/s |
| Antivirus throughput (proxy) | 35Mbit/s | 50Mbit/s | 75Mbit/s | 235Mbit/s | 375Mbit/s | 1.4Gbit/s | 1.7Gbit/s | 3.8Gbit/s |
| Concurrent connections | 20,000 | 40,000 | 300,000 | 1 million | 2 million | 3 million | 4.5 million | 6 million |
| Ethernet interfaces (copper) | 4*GE | 4*GE | 4*GE | 8*GE | 8*GE | 6*GE | 8*GE (default LAN module) | 8*GE (default LAN module) |
| Ethernet interfaces (SFP) | - | - | - | - | - | 2*GE | 8*GE (special LAN-module) | 8*GE (special LAN-module) |

United Kingdom and Worldwide Sales
Tel: +44 (0)8447 671131
Email: sales@sophos.com

North American Sales
Toll Free: 1-866-866-2802
Email: nasales@sophos.com

Australia and New Zealand Sales
Tel: +61 2 9409 9100
Email: sales@sophos.com.au

Asia Sales
Tel: +65 62244168
Email: salesasia@sophos.com

Oxford, UK | Boston, USA

© Copyright 2013. Sophos Ltd. All rights reserved.

Registered in England and Wales No. 2096520, The Pentagon, Abingdon Science Park, Abingdon, OX14 3YP, UK
Sophos is the registered trademark of Sophos Ltd. All other product and company names mentioned are trademarks or registered trademarks of their respective owners.